

BLACK JACK PROFESSIONAL SERIES

Game Type: Table Game
Return to Player: 99.53%

Black Jack Professional Series is an exciting new 3-hand blackjack game from Net Entertainment featuring a 3D look and feel with state of the art card animations and Double Jack™ sidebet.



Game Sheet Version: 1.2
Date: 2014-05-12

NETENT

GENERAL INFORMATION

Game Type	Table Game
Default Chip Values (€)	Low Limit: 0.10, 0.50, 1 Standard Limit: 1, 5, 10 High Limit: 25, 50, 100, 500 VIP Limit: 50, 100, 500, 1000
Default Min / Max Bet (€)	Low Limit: 0.1 / 5 Standard Limit: 1 / 40 High Limit: 25 / 500 VIP Limit: 50 / 3 000

GAME FEATURES

- Up to 3 hand simultaneous gameplay.
- Double Jack™ side bet.
- Adjustable game speed.

PAYOUT

Return to Player (%)	99.53
Default Maximum Win (€)	Low Limit: 120 (side bet 1 140) Standard Limit: 960 (side bet 9 120) High Limit: 12 000 (side bet 1 14 000) VIP Limit: 72 000 (side bet 6 84 000)

RESPONSIBLE GAMING

Player Limits	<ul style="list-style-type: none"> • Player and casino operator can set the following play limits: Bet @ loss per session, day, week or month. Block all play for a specified period of time. Restrict session play length in minutes. • Playing for real is restricted by player account funds (i.e. cannot play for credit). • (Italy jurisdiction only) Player can initially have a maximum of 1.000 € in the wallet. Since each game is a user session, the player's wallet may exceed this limit during play.
Other	<ul style="list-style-type: none"> • Play for Fun • G4 mode

TECHNICAL INFORMATION

Game ID	Low Limit: lrblackjack2-3h Standard Limit: blackjack2-3h High Limit: hrblackjack2-3h VIP Limit: vipblackjack2-3h (basic wallet) Add _sw for seamless wallet
Game Version	1.0
Paytable Version	1.0
Screen Footprint	Optimised for 640x480 and 1024x768
Flash Player	Flash 8 or higher
Deployment	Refer to CasinoModule Help for information about launching CasinoModule games.



Game Features on the Intro Screen

Game Theme and Graphics

A world class game experience - Professional Series Blackjack is the first of a new breed of table games featuring a table layout with 3D perspective and state of the art card and chip animations.

Colour coded game buttons used to play blackjack hands are located in front of the player. Depending on the stage in the game they can deal, draw, hit, stand, split, double, accept even money, or buy insurance.



Table layout

Double Jack Side Bet

Double Jack™ is a Blackjack side bet that is easy to understand and offers the player the chance of multiplying their bet up to one hundred times! This will boost game turnover without affecting normal Blackjack game play. Blackjack side-bets have proven popular with players and increase both cash drop and win/hold percentages for the game as a whole.

Double Jack™ is simple and intuitive to understand yet fast and exciting. It is based on the first two cards dealt and the bet is settled directly upon completion of the initial deal, leaving the main game, rules and strategy unaffected. The side bet has the same table limit as the blackjack bet, and cannot be more than the blackjack bet placed.

A Double Jack™ bet pays out in the following three situations:

- The first two cards in the regular Blackjack hand is a pair of Jacks of spades.
- The first two cards in the regular Blackjack hand is a pair of Jacks.
- The first card in the regular Blackjack hand is a Jack.



Payout

Blackjack is played with 4 hands and the cards are re-shuffled after each round. The following rules apply:

- Dealer must stand on 17 (including soft 17) and must draw to 16.
- Double on any two cards.
- Split up to 2 hands.
- No surrender.



Hand information displays

Intuitive Betting and Blackjack Play

Players select the chip value at the bottom right of the game (default 1, 5, and 10) and place their bets on 1 to 3 hands. A delete chip allows players to remove any bets before the blackjack deal starts.

Players click **Deal** and the game dealer automatically deals the first two cards for each blackjack hand.

Information about the state of each hand in the game is displayed on the table, thereby enabling beginners to quickly enter the exciting world of blackjack.



Blackjack and Double Jack™ Payout

Payout and Game Panel

Players can view the Blackjack and Double Jack™ payout by moving the mouse over the MIN/MAX sign on the table.

The game panel at the bottom of the game displays the available amount in the player account, as well as the amount bet and won.

Buttons for the game settings menu, audio, game rules are located to the left on the game panel.

Game panel

PAYOUT

Payout Summary

GAME RETURN TO PLAYER (RTP)

- Blackjack: 99.53%
- Sidebet: 95.07%

MAXIMUM WIN - EURO

- Low Limit: 120 (side bet 1 140)
- Standard Limit: 960 (side bet 9 120)
- High Limit: 12 000 (side bet 1 14 000)
- VIP Limit: 72 000 (side bet 6 84 000)

Paytable

BLACKJACK PAYOUT	DOUBLE JACK PAYOUT
Blackjack 3 to 2	Two Jacks of Spades 100 to 1
Insurance 2 to 1	Pair of Jacks 25 to 1
Win 1 to 1	First is Jack (<i>single Jack</i>) 10 to 1

Randomisation

RANDOM NUMBER GENERATOR (RNG)

The algorithm used for random number generation (RNG) is Fortuna, a cryptographically secure pseudorandom number generator (PRNG) devised by Bruce Schneier and Niels Ferguson. For more information, see the document Random Number Generation.

The Random Number Generator and its implementation has been tested and approved/certified for randomness according to prevailing industry standards by an independent 3rd party verification body, Technical Systems Testing in Canada.

ALGORITHM FOR A RANDOM CARD

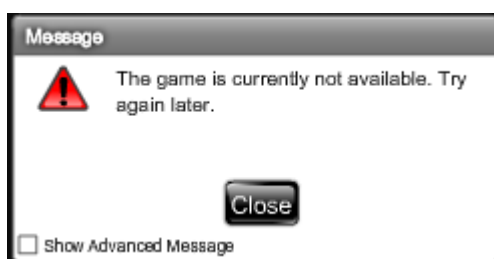
A deck of cards is static and will always contain the same amount of cards. A card can either be available or unavailable. The deck resides in a session unique context and will never be subject to concurrency issues.

1. If needed; a new deck is created (the new deck is not shuffled).
2. The cards in the deck are iterated. All cards that count as "available" get their index added to an "available card index" array.
3. A random number between 0 (zero) and the length of the "available card index" array is acquired.
4. A card index is then selected from "available card index" array at the position of the random number.
5. The card in the deck at the position of the card index is "drawn" from the deck by setting the card as unavailable.
6. The card is added to the game as "the next card to use".

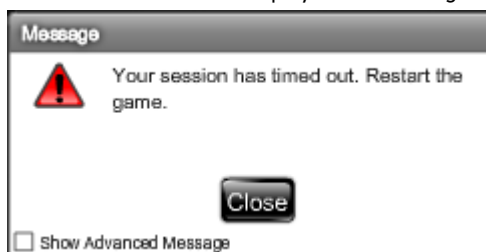
Malfunction Management

If a player attempts to access a game using an invalidated session, (for example, due to inactivity or system restart) an error message is displayed in the game. The player can then log on again and resume game play. The game state is always stored so the player can resume game play exactly where he or she left off.

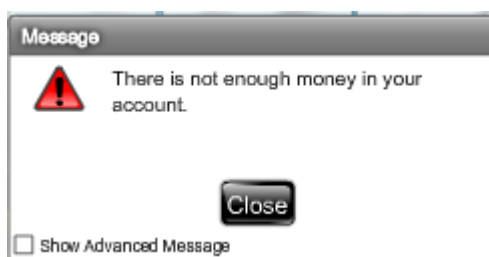
In case of an HTTP error, network timeout or server error a "technical error" message will be displayed to the player and the game will stay in an "unavailable" state until the player reloads the game at a time when the game becomes available.



If a session times out, a "session timeout" message will be displayed to the player and the game will stay in an "unavailable" state until the player reloads the game.



In case of an "out of money" event, an "out of money" message will be displayed to the player and the game will stay in an "unavailable" state until the player reloads the game.



Further information on management of malfunctions is also described in section 3.2.1 of the Gaming Platform (Progetto Della Piattaforma Di Gioco) document. This document provides details on how a player is informed of balance return payments and the technical process.

Information regarding session timeouts and malfunctions is provided to the player via the game rules. Specifically, the player is informed that "In the event of malfunction of the gaming hardware/software, all affected game bets and payouts are rendered void and all affected bets refunded."

Information to the Player

Players receive a response required message every hour of continuous play: They cannot continue playing unless they respond to the message which provides them with details about the amount bet and won so far during game play.

Players also have access to their game session history and game rules from within the game at all times.

Game Simulation

A demo version of the game is available at <http://www.netent.com/games/>

DOCUMENT VERSION HISTORY

Black Jack Professional Series Game Sheet
Version 1.2, 2014-05-12

VERSION	WHEN	WHAT
1.2	2014-05-12	New generic layout
1.1	2013-05-20	Updated layout.
1.0	2010-09-01	First version.