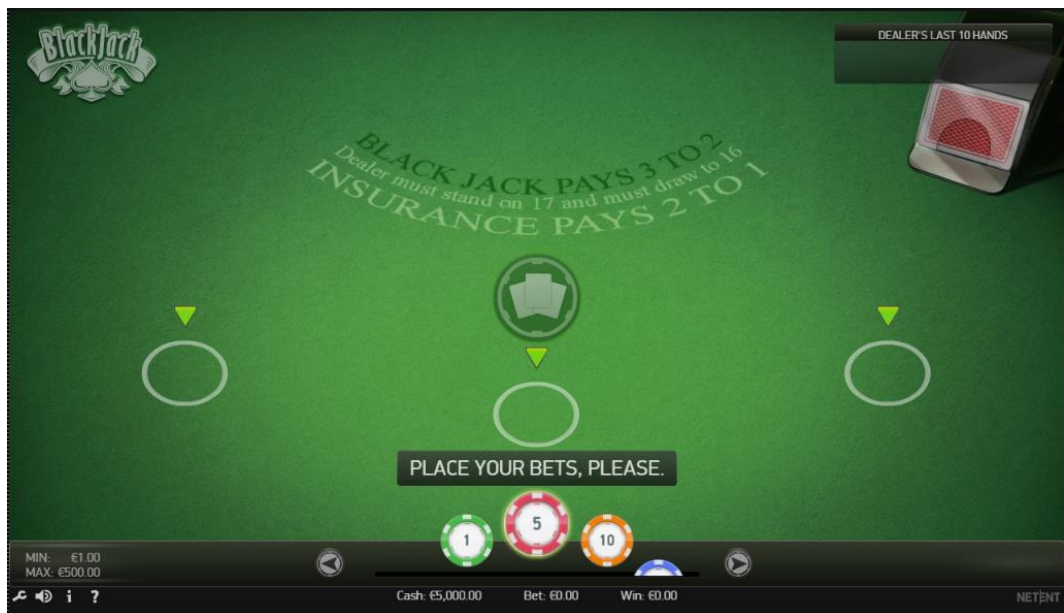


BLACKJACK™

Game Type: Table Game
Return to Player: 99.59%

BlackJack™ is an exciting new 3-hand and 6 deck blackjack game from NetEnt. The user-friendly interface creates a gaming experience richer than anything seen before.



GENERAL INFORMATION

Game Type	Table Game
Chip Values (€)	Default values: 1, 5, 10 Certified range: 0.10-10000
Min / Max Bet (€)	Default: 1 / 500 Certified: 0.10 / 10000

GAME FEATURES

- Up to 3 hand simultaneous gameplay
- Double and Split
- Insurance and Even Money

PAYOUT

Return to Player (%)	99.59
Default Maximum Win (€)	Default: 12000 Certified: 240000

RESPONSIBLE GAMING

Player Limits	<ul style="list-style-type: none"> • Player and casino operator can set the following play limits: Bet & loss per session, day, week or month. Block all play for a specified period of time. Restrict session play length in minutes. • Playing for real is restricted by player account funds (i.e. cannot play for credit). • (Italy jurisdiction only) Player can initially have a maximum of 1.000 € in the wallet. Since each game is a user session, the player's wallet may exceed this limit during play.
Other	<ul style="list-style-type: none"> • Play for Fun • Variable bet levels • G4 mode

TECHNICAL INFORMATION

Game ID	blackjack3_not_mobile (basic wallet) blackjack3_not_mobile_sw (seamless wallet)
Game Version	1.0
Paytable Version	1.0
Display Resolution	Optimised for 1280x720
Aspect Ratio	16:9
Technology	HTML5 or higher
Deployment	Refer to CasinoModule Help for information about launching CasinoModule games.

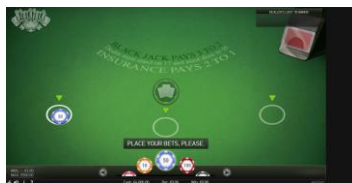


Blackjack™ Game Theme and Graphics

Game Theme & Graphics

Blackjack™ carries on the NetEnt tradition of superb aesthetics and superior design. It features crisp, clean graphics and a streamlined design that will meet the most sophisticated tastes.

The game buttons used to play blackjack hands are located in front of the player. Depending on the stage in the game they can deal, hit, stand, split, double, accept even money, or buy insurance.



Placing Bets

Placing Bets

The Blackjack™ betting system makes it easy for the players to place and remove their bets. The player selects the desired chip and clicks the bet area to place the bet. Repeated clicks increase the bet by the value of the selected chip; the player sees the chips stack up, and the total value displayed above the chips increases accordingly.

To remove the latest bet, the player clicks the clear button. To double the bet, the player clicks the Double button.



Gameplay

Gameplay

Players select the chip value (default 1, 5, and 10) and place their bets on 1 to 3 hands.

Players click the Deal button and the computerized dealer automatically deals the first two cards for each blackjack hand.

Depending on the stage in the game they can deal, hit, stand, split, double, take even money, or buy insurance.

After the player decides to Stand, the dealer's result is displayed above the cards. The chips are then collected or distributed according to the payout rules.

Before the next game round starts, the player is given the options to either Rebet or place a New Bet.



Double

Double and Split

During gameplay the player will also have the opportunity to increase the stakes by splitting or doubling according to the game rules. Doubling will double the player's initial bet, while splitting allows the player to split two cards of equal rank into two new hands.



Split



Insurance



Even Money

Insurance and Even Money

Blackjack™ also offers players an insurance when the dealer's visible card is an ace. Insurance comes at a cost of half the original bet. The game also gives an option of even money when the dealer's visible card is an ace and the player has Blackjack.

When an option for insurance or even money is present, the player simply answers by clicking Yes or No to accept or decline.

Payout Summary

GAME RETURN TO PLAYER (RTP)

- Blackjack: 99.59%

MAXIMUM WIN - EUR


- Default: 12000
- Certified: 240000

If a 10-value card, that is, the number 10 card of any suit or a king, queen or jack, plus an ace is initially dealt in any hand, it is considered Blackjack.

Blackjack pays 3:2.

Blackjack beats all other hands with a value of 21, except a Blackjack.

Paytable



<u>Result</u>	<u>Pays</u>
Blackjack	3:2
Insurance	2:1
Win	1:1
Even Money	1:1
Push	The bet is returned.

Randomisation

RANDOM NUMBER GENERATOR (RNG)

The algorithm used for random number generation (RNG) is Fortuna, a cryptographically secure pseudorandom number generator (PRNG) devised by Bruce Schneier and Niels Ferguson. For more information, see the document Random Number Generation.

The Random Number Generator and its implementation has been tested and approved/certified for randomness according to prevailing industry standards by an accredited, independent, 3rd party test facility.

ALGORITHM FOR A RANDOM CARD

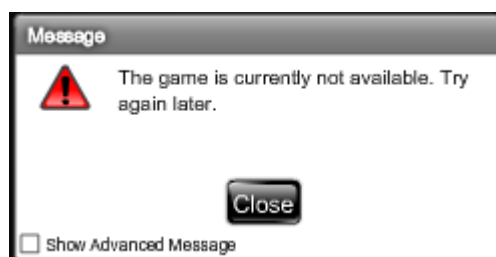
A deck of cards is static and will always contain the same amount of cards. A card can either be available or unavailable. The deck resides in a session unique context and will never be subject to concurrency issues.

1. If needed; a new deck is created (the new deck is not shuffled).
2. The cards in the deck are iterated. All cards that count as "available" get their index added to an "available card index" array.
3. A random number between 0 (zero) and the length of the "available card index" array is acquired.
4. A card index is then selected from "available card index" array at the position of the random number.
5. The card in the deck at the position of the card index is "drawn" from the deck by setting the card as unavailable.
6. The card is added to the game as "the next card to use".

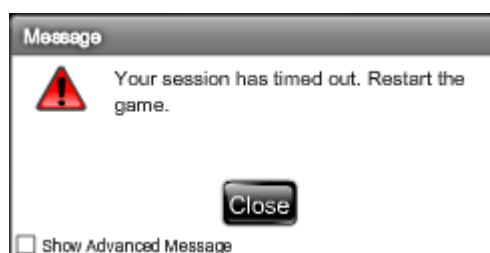
Malfunction Management

If a player attempts to access a game using an invalidated session, (for example, due to inactivity or system restart) an error message is displayed in the game. The player can then log on again and resume game play. The game state is always stored so the player can resume game play exactly where he or she left off.

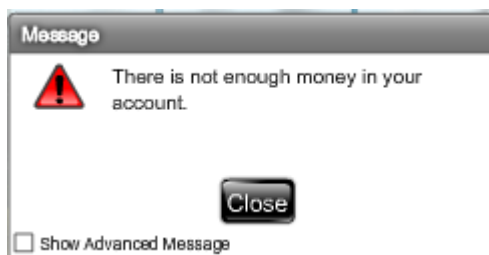
In case of an HTTP error, network timeout or server error a "technical error" message will be displayed to the player and the game will stay in an "unavailable" state until the player reloads the game at a time when the game becomes available.



If a session times out, a "session timeout" message will be displayed to the player and the game will stay in an "unavailable" state until the player reloads the game.



In case of an "out of money" event, an "out of money" message will be displayed to the player and the game will stay in an "unavailable" state until the player reloads the game.



(Italy jurisdiction only) Further information on management of malfunctions is also described in section 3.2.1 of the Gaming Platform (Progetto Della Piattaforma Di Gioco) document. This document provides details on how a player is informed of balance return payments and the technical process.

Information regarding session timeouts and malfunctions is provided to the player via the game rules. Specifically, the player is informed that "In the event of malfunction of the gaming hardware/software, all affected game bets and payouts are rendered void and all affected bets refunded."

Information to the Player

Players receive a response required message every hour of continuous play: They cannot continue playing unless they respond to the message which provides them with details about the amount bet and won so far during game play.

Players also have access to their game session history and game rules from within the game at all times.

Game Simulation

A demo version of the game is available at <http://www.netent.com/games/>

DOCUMENT VERSION HISTORY

BlackJack™ Game Sheet
Version 1.2, 2015-03-06

VERSION	WHEN	WHAT
1.2	2015-03-06	Updated max bet, max win and certified chip range
1.1	2015-02-19	Updated the game id to blackjack3_not_mobile..
1.0	2015-02-19	First version.